



EASTERN OREGON
UNIVERSITY



internet\

Search

Login



My.EOU Portal

IT Status Page

Knowledge Base

Data Oversight



Training Request

Contact Support



☰ Student Discount Programs for Local Internet Service Providers (ISP)

🕒 Sep 14, 2021 · Knowledge

Here is a list of local Internet Service Providers that provide discounts to Students

EONI - 541-962-7873 - www.eoni.com

Students must provide a current schedule or show EOU ID

\$50 Installation fee - router provided - \$49.95/month for highest speed

(A note that most apartments/rentals do not allow EONI to install their equipment on their structures)

Oregon Wireless - 541-568-2000 - www.oregonwireless.com

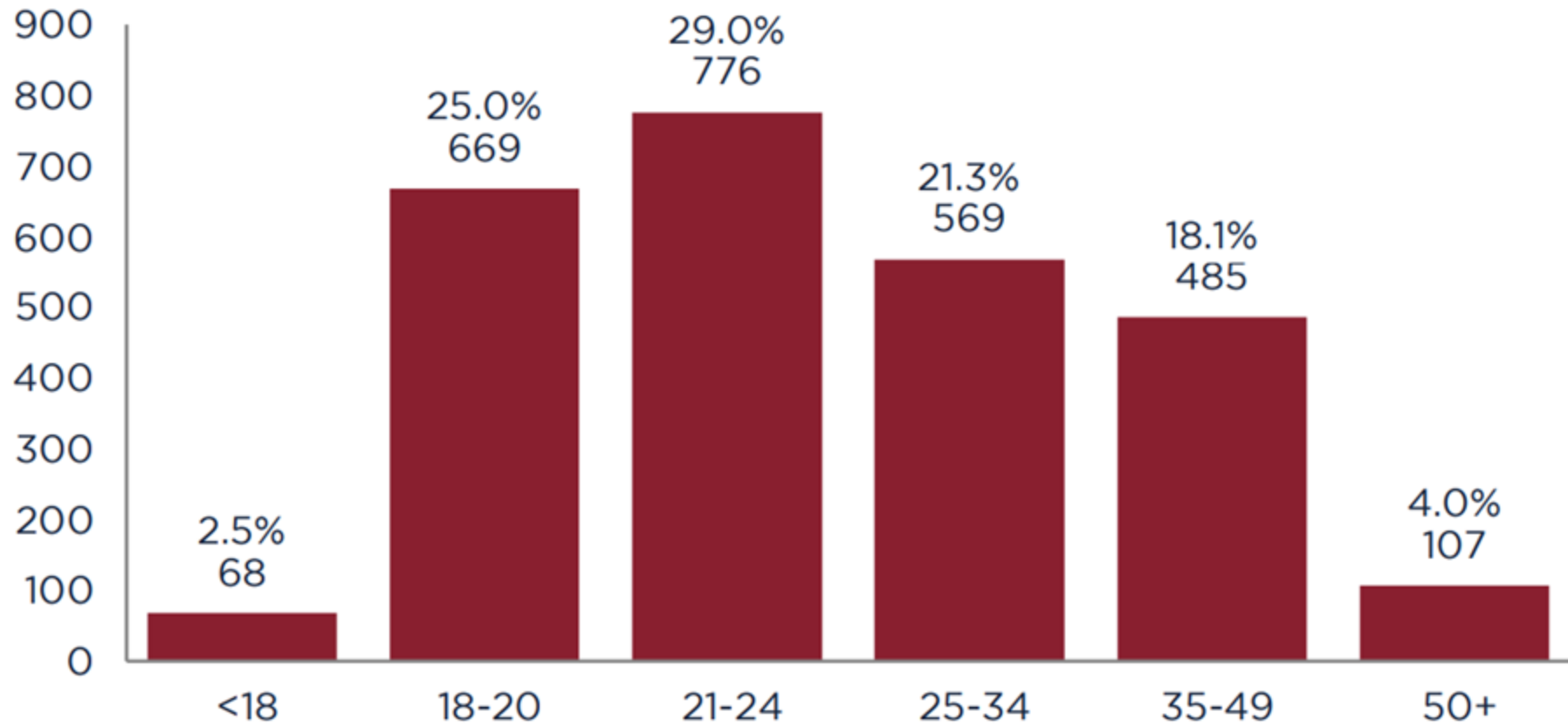
They have two levels of service in Union and Baker County:

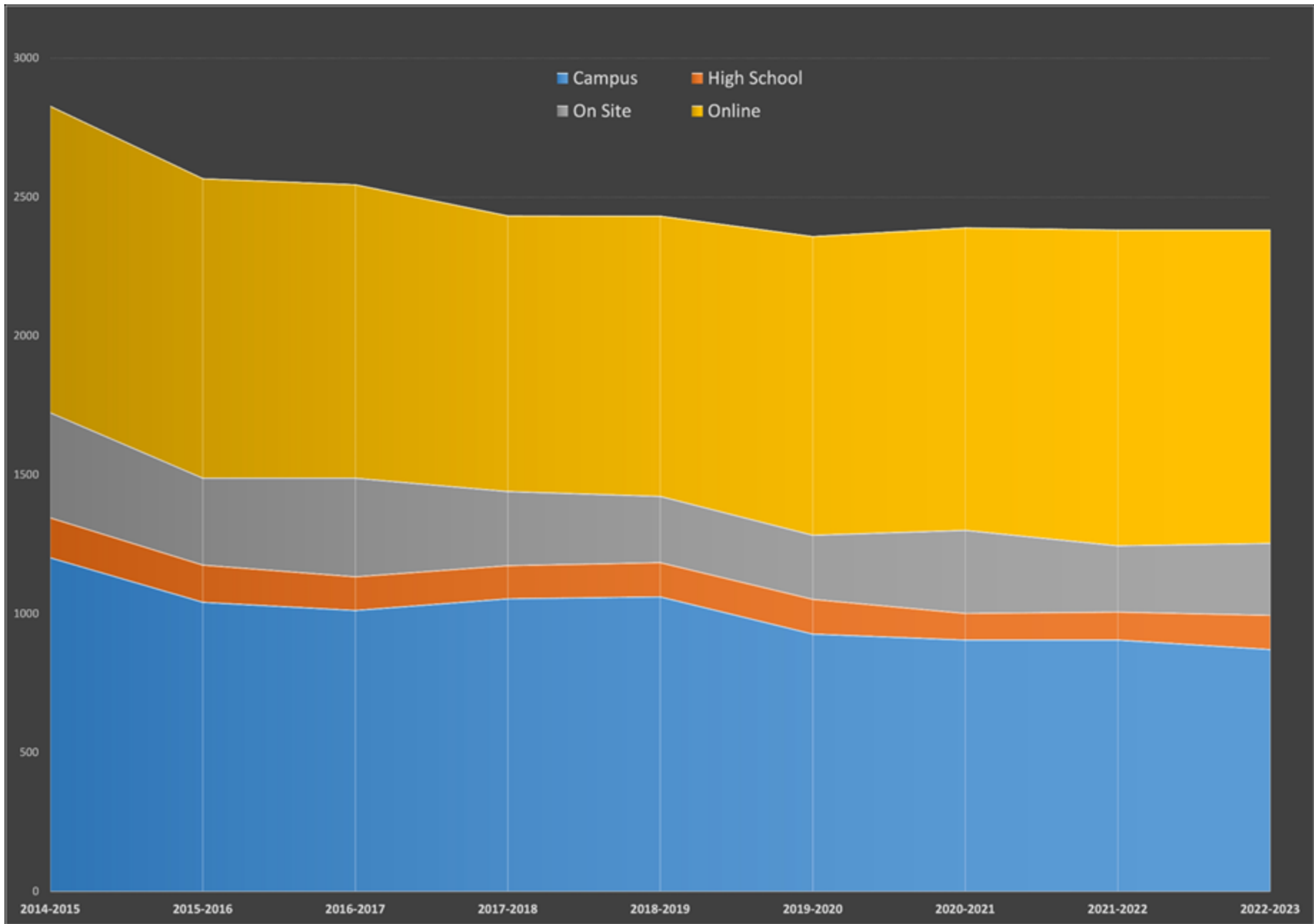
Silver \$39.95/ month or \$119.85/ quarter for up to 15 Mbps

Gold \$49.95/ month or \$149.85/ quarter for up to 30 Mbps

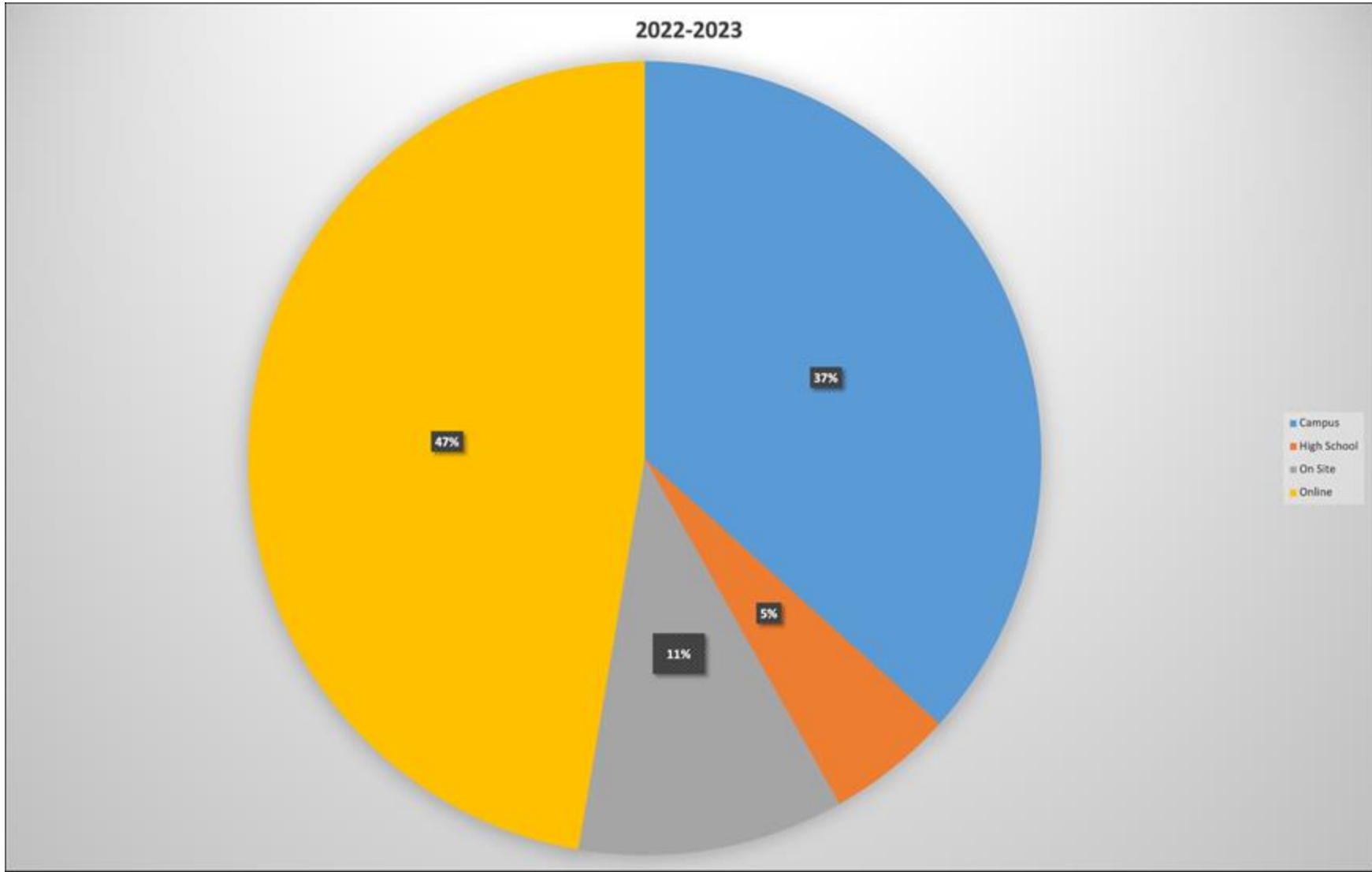
There is a one time setup and connection fee of \$149.00. There is no maximum amount of usage and no contract to sign. We do ask that you give us a 30 day notice of cancellation.

Age distribution





EASTERN OREGON UNIVERSITY





Account



Dashboard



Courses



Calendar



Inbox



History



Help



Student Resources



Student Resources

Spring 2023

Home

Modules

Announcements

Assignments

Discussions

Grades

MyLab and Mastering

EOU Library

Office 365

Student Resources

Academic Dishonesty Report

ECON 202-101: Macroeconomics*SSC (97005-Spring 2023)



Econ 202-102: Principles of Macroeconomics (Online)

Eastern Oregon University, Spring 2023

Please download and read the syllabus here: [EOU Econ 202-102 Spring 2023 Syllabus.docx](#)

Optional Introductory Video



Below you will find a summary of the information for this course. However, you are responsible for reading and understanding the material in the entire syllabus.

Instructor Info:

Samantha Marie Schenck, Ph.D.

smschenck@eou.edu

[View Course Stream](#)

[View Course Calendar](#)

[View Course Notifications](#)

To Do

Nothing for now



EASTERN OREGON
UNIVERSITY

An aerial photograph of a large agricultural field with rows of green crops. A blue tractor with a green implement is visible in the upper right quadrant, moving through the field. The text is overlaid on the left side of the image.

Broadband and Precision Agriculture

Austin Bingaman

Director, OTEC Board of Director



GA Bingaman Farms

- 5th generation in Grande Ronde Valley
- Century Farms
- Crops
 - Grass seed
 - Alfalfa
 - Barley
 - Canola
 - Sod Grass

What is precision agriculture?

- A farming technique that utilizes new technologies to increase crop yields while lowering the levels of traditional inputs necessary to grow crops.
- Farmers are using less to grow more.
- Precision Ag leverages data gathered through sources such as drones, satellite mapping and sensors to make decisions about how to manage each individual piece of land.
- Finally, it contributes to sustainable agricultural practices.





Precision Agriculture

- 2007 – 2008: Timeframe with GPS autosteer – herbicide/pesticide applications, fertilizer applications.
 - Speed and position – repeatable accuracy up to an inch.
- Remote center-pivot irrigation
- Yield mapping
- Data storage and analysis – cloud based, 24/7.





Close Summer plant fescue Edit

ACTUAL 4366684

Created: Aug 28, 2023 Updated: Aug 30, 2023

DETAILS

Activity Title Summer plant fescue
 For Bingaman Farms
 Authored By Rowdy Graves
 Operator
 Started Aug 28, 2023 at 8:10 AM
 Completed Aug 26, 2023 at 9:10 AM
 Sent Status Not sent

INPUTS

Pro-Germinator 9-24-3

Rate 3 gal/acre
 Total Amount 159 gal
 Cost \$22.77 /acre

High NRG-N 27-0-0 with 1% Sulfur

Rate 2 gal/acre
 Total Amount 106 gal
 Cost \$6.02 /acre

Kalibrate Precision Potassium (2-0-10)

Rate 1 gal/acre
 Total Amount 53 gal
 Cost \$7.89 /acre

Micro 1000

Rate 1 qt/acre
 Total Amount 13.25 gal
 Cost \$6.46 /acre

Austin 7230R Working As of now...

-- hrs 84%

Right Now **Today** Work Alerts Setup

Application

12.3 ac/hr 19.3 ac/hr

Utilization

72% 11% 17%

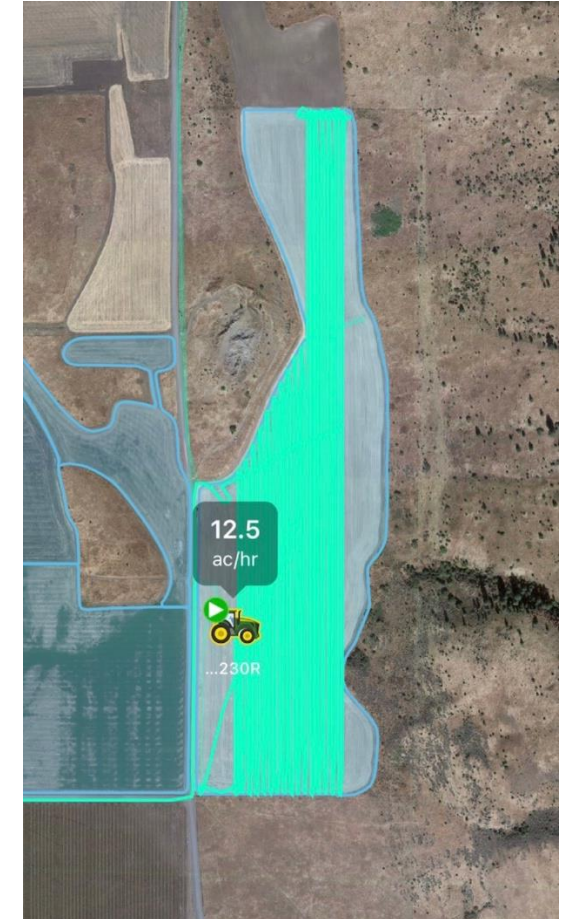
Hours of Operation

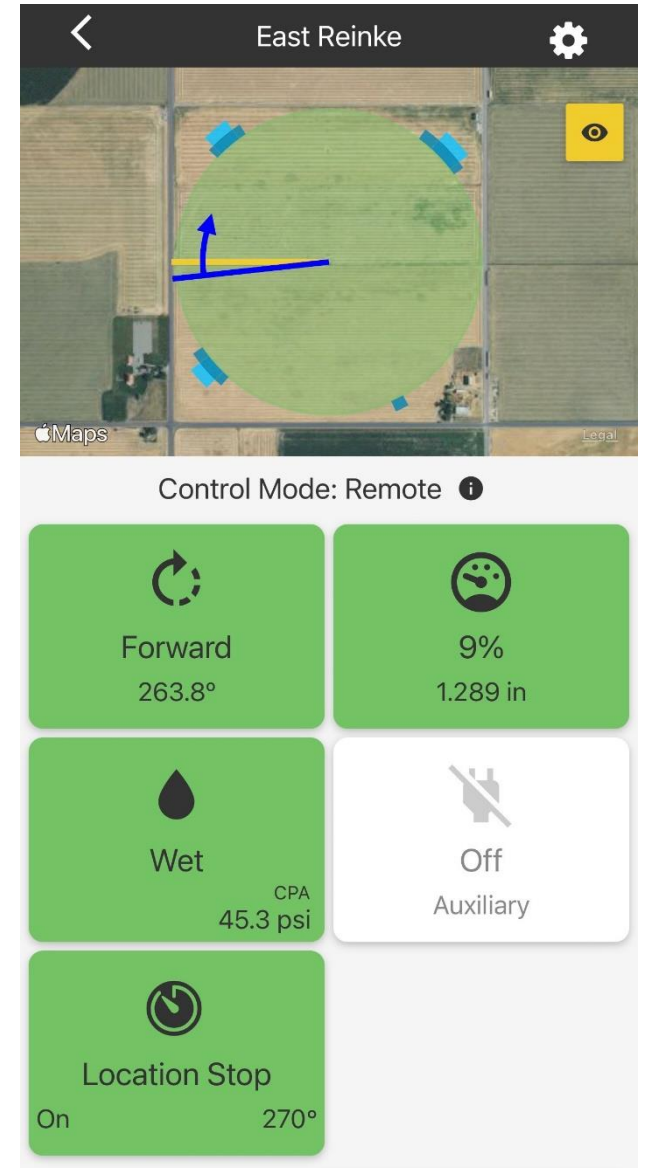
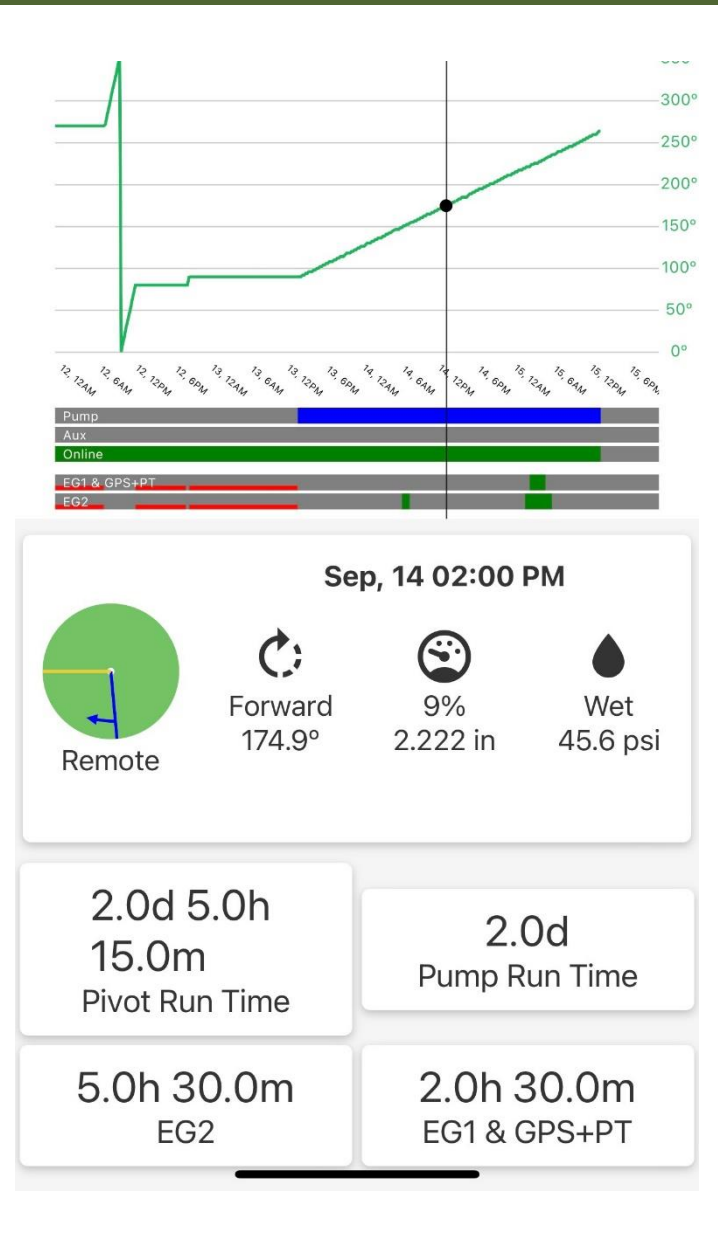
8AM 10AM 12PM 2PM 4PM

Working 3 hr 26 min Idle 49 min Transpo 30 min

On Off Unavailat

Total Time 4 hr 46 min





Benefits of Precision Agriculture



Autosteer

Operator fatigue
Precision of applications
Higher efficiency
Remote maintenance



Irrigation

Efficiency of the system
Reduction in system management
Efficient uses of water

What it takes..

- Bandwidth for multiple purposes:
 - End user (farmer) operation
 - End user (farmer) remote troubleshooting
 - Manufacturer remote troubleshooting
 - Data analytics

The future of precision agriculture..



Autonomous tractors



Drones/UAVs



Real-time irrigation adjustments
based off plant needs

Oregon Broadband Office

September 2023

Nick Batz, Director

Oregon Broadband Office



Broadband Office Timeline

2019 – Data, map and plan development (1 FTE)

2020 – Plan issued, COVID response program (1 FTE)

2021 - Funding and staff case and budget (1 FTE)

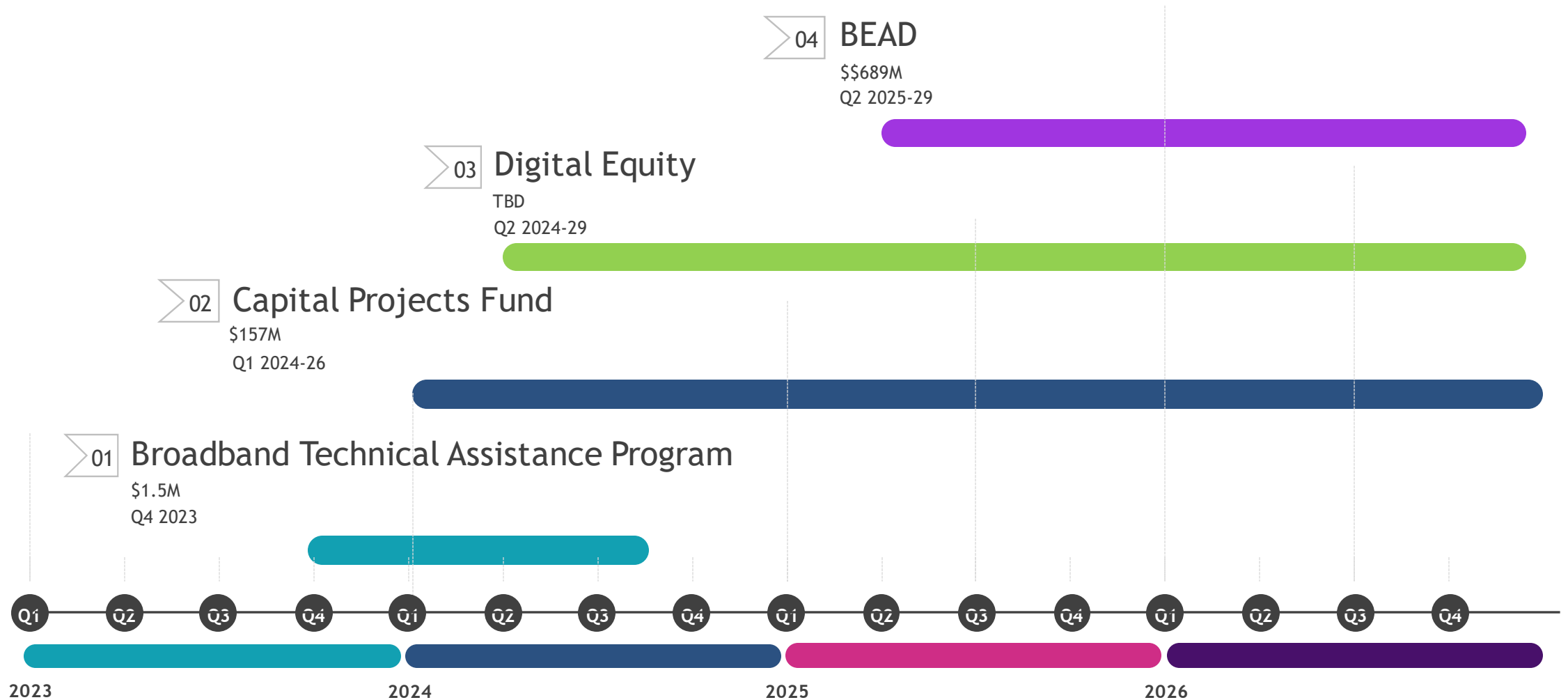
2022 – Program development and federal grant applications (4 FTE)

2023 – Develop programs, write BEAD and Digital Equity plans (9 FTE)

Funding

- \$6.5M, Universal Service Fund – Broadband Technical Assistance Program (BTAP)
 - **\$1.5m in spending limitation**
- \$157M, US Treasury – American Rescue Plan Act Capital Projects Fund (ARPA CPF)
 - **AWARDED \$7.8M, Remaining \$ IN-PROGRESS**
- \$782K+Formula, National Telecommunications and Information Administration– Digital Equity
 - **AWARDED \$782K, Remaining \$ IN-PROGRESS**
- \$689M, National Telecommunications and Information Administration– Broadband Equity, Access & Deployment (BEAD)
 - **AWARDED \$5M, Remaining \$ IN-PROGRESS**

Oregon Broadband Programs - Rollout



BEAD & Digital Equity Deadlines

- **5 Year Action Plan**, 270 days from receipt of funds
 - Submitted to NTIA **8/28/23**
- **Statewide Digital Equity Plan**, 1 year from award which is **11/13/23**
- **Initial Proposal**, 180 days from notice of available amounts on June 30, 2023 which is **12/27/23**
- **Final Proposal**, no later than twelve (12) months after the date upon which the Assistant Secretary approves the Eligible Entity's 's Initial Proposal (**2024-25**)

BEAD Initial Proposal Timeline

